

换挡器PRNDS传感器 Shifter PRNDS Sensor

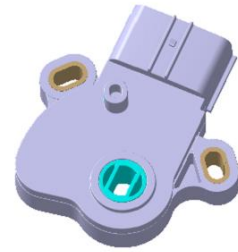
产品介绍 Product Description

该产品是用于检测到换挡信号，传感器上有多个触点，当汽车换挡时，触点移动到对应档位上，电压值改变，将信号传送到变速器控制系统，从而控制相应的执行元件工作的换挡器PRNDS传感器。

This product is used to detect the shift signal. There are multiple contacts on the sensor. When the car is shifting, the contact moves to the corresponding gear, the voltage value changes, and the signal is transmitted to the transmission control system, so as to control the operation of the corresponding actuator PRNDS sensor.

产品特征及优势 Feature and benefits

- ◆ 工作温度范围广，为-40-150℃。
The working temperature range is - 40-150 °C.
- ◆ 使用寿命长，可靠性高。
Long service life and high reliability.
- ◆ 坚固的结构使该传感器非常适合恶劣环境。
Robust construction makes this sensor well suited to harsh environments.
- ◆ 高精度。
High Accuracy.



换挡器 PRNDS 传感器
Shifter PRNDS sensor

产品作用 Application

- ◆ 检测换挡信息。
Detect shift information.

操作 Operation

◆ 基本原理 Basic principle:

档位开关传感器是用来检测档位信号的，档位传感器上有多个触点，当汽车换挡时，触点移动到对应档位上，电压值改变，档位传感器检测到换挡信号，将信号传送到变速器控制系统，从而控制相应的执行元件工作。

The gear position switch sensor is used to detect the gear position signal. There are multiple contacts on the gear position sensor. When the car shifts gears, the contact moves to the corresponding gear, and the voltage value changes. The gear position sensor detects the shift signal and transmits the signal to the transmission control system to control the operation of the corresponding actuator.

◆ 连接选项 Connection options:

根据客户选择定制连接系统。
Customized to customer choice of connection system.

◆ 包装选项 Packaging Options:

可提供定制包装以满足任何需要，请联系KESENS技术部了解详情。
Custom packaging can be provided to meet any need, please contact KESENS Engineering for details.

换挡器PRNDS传感器 Shifter PRNDS Sensor

技术参数 Functional Characteristics

挡位角度范围

	基准角度	角度范围(基于N基准角度)	角度范围
P	-27.8° (-27° 48')	>-32.05° (>-32° 03')	7.52°
		-24.53° ±1° (-24° 32' ±1°)	
R	-10.98° (-10° 59')	-21.83° ±1° (-21° 50' ±1°)	17.75°
		-4.08° ±0.75° (4° 5' ±45')	
N	0°	-2.53° ±0.75° (-2° 32' ±45')	5.23°
		+2.7° ±0.75° (+2° 42' ±45')	
D	+10.87° (+10° 52')	+4.25° ±0.75° (+4° 15' ±45')	11.17°
		+15.42±1° (+15° 25' ±1°)	
S	+22.02° (+22° 01')	+17.5° ±1° (+17° 30' ±1°)	9.45°
		+26.95° ±1° (+26° 57' ±1°)	

可根据需要定制不同量程及电气和环境规范的产品，详情请联系KESENS研发部。

Products with different ranges and electrical and environmental specifications can be customized according to needs.

Please contact KESENS design department for details.