

踏板位置传感器 PTS Sensor

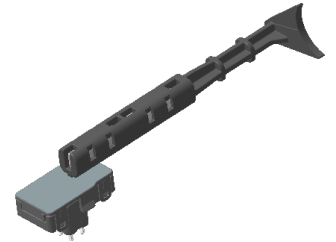
产品介绍 Product Description

该产品是基于霍尔原理而设计的，安装在制动踏板系统中用于检测踏板位置信号的踏板行程位置传感器。

The product is designed based on Hall principle, and is installed in the brake pedal system as the pedal travel position sensor to detect the pedal position signal.

产品特征及优势 Feature and benefits

- ◆ 工作温度范围广，为-40-125℃。
The working temperature range is - 40-125 °C.
- ◆ 密封、磁操作的非接触式传感，使用寿命长，可靠性高。
Hermetically sealed, magnetically operated non-contact sensing gives excellent life and reliability.
- ◆ 坚固的结构使该传感器非常适合恶劣环境。
Robust construction makes this sensor well suited to harsh environments.
- ◆ 高精度。
High Accuracy.



PTS 传感器
PTS sensor

产品作用 Application

- ◆ 用于检测制动踏板位置信息。
Used to detect brake pedal position information.

操作 Operation

◆ 基本原理 Basic principle:

该传感器内存在霍尔芯片，可根据外部磁场的变化输出对应的高低电平信号，ECU端根据不同信号的组合判断当前位置信息。

There is a Hall chip in the sensor, which can output the corresponding high and low level signals according to the changes of the external magnetic field. The ECU terminal judges the current position information according to the combination of different signals.

◆ 连接选项 Connection options:

根据客户选择定制连接系统
Customized to customer choice of connection system

◆ 包装选项 Packaging Options:

可提供定制包装以满足任何需要，请联系KESENS技术部了解详情。
Custom packaging can be provided to meet any need, please contact KESENS Engineering for details.

踏板位置传感器 PTS Sensor

技术参数 Functional Characteristics

参数PARAMETER	最小值MIN.	额定值NOM.	最大值MAX.	单位UNITS	备注COMMENT
工作温度 TEMPERATURE RANGE	-40		125	°C	
供电电压 SUPPLY VOLTAGE	4.5	5	5.5	V	
供电电流 SUPPLY CURRENT		8	12	mA	
低电平信号 LOW LEVEL SIGNAL	0		0.5	V	
高电平信号 HIGH LEVEL SIGNAL	4.5		5	V	

可根据需要定制不同量程及电气和环境规范的产品，详情请联系KESENS研发部。

Products with different ranges and electrical and environmental specifications can be customized according to needs.
Please contact KESENS design department for details.