

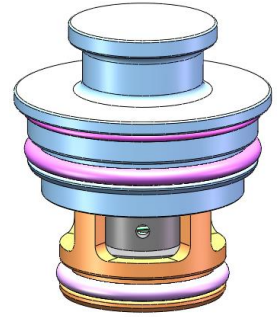
## CV 单向阀 CV Check Valve

### 产品介绍 Product Description

CV 单向阀主要介质为R134a或R1234yf。  
The main medium of CV check valve is R134a or R1234yf.

### 产品特征及优势 Feature and Benefits

- ◆ 单向使用/Unidirectional use
  - ✧ 正向施加压力关闭，反向施加压力打开；  
Apply positive pressure to close and reverse pressure to open.
- ◆ 密封性好/ Good sealing
  - ✧ 使用橡胶密封，可靠性高；  
Use rubber seal, high reliability.



CV 单向阀  
CV Check Valve

### 产品作用 Application

CV单向阀，安装在系统中实现介质的单向流动；  
The CV check valve, installed in the system to control the one-way flow of media.

### ◆ 包装选项 Packaging Options:

可提供定制包装以满足任何需要，请联系KESENS技术部了解详情。  
Custom packaging can be provided to meet any need, please contact KESENS Engineering for details.

### 技术参数 Functional Characteristics

项目 ITEMS	参数 PARAMETER
阀口直径 Valve Port Diameter	12mm
工作介质 Working Medium	R134a or R1234yf
环境温度 Ambient Temperature	-40°C ~ +125°C
工作温度 Temperature Range	-40°C ~ +125°C
外漏 External Leakage	≤1.5g/y @ 1.47MPa
内漏 Internal Leakage	≤10ml/min @ 1.03MPa
最大工作压力 Maximum Working Pressure	3.1MPa
最小开阀压差 Minimum opening valve pressure difference	≤10kPa
爆破压力 Burst Pressure	10.6MPa
寿命耐久 Lifetimes	>150,000 cycles@1.47MPa

## CV 单向阀 CV Check Valve

可根据需要定制电气和环境规范，详情请联系KESENS技术部。

Custom electrical and environmental specifications can be designed to meet any need, please contact KESENS Engineering for details.