

氢气/燃气压力传感器 Hydrogen / Gas pressure sensor

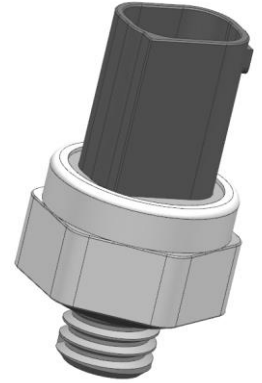
产品介绍 Product Description

氢气/燃气压力传感器基于APT技术而设计的一种测量输气管路中的氢气/燃气压力的传感器。

Hydrogen / Gas pressure sensor is a sensor designed based on APT Technology to measure hydrogen / gas pressure in gas transmission pipeline.

产品特征及优势 Feature and benefits

- ◆ 工作温度范围广，为-40-130℃，并具有全温区补偿。
The working temperature range is wide, from - 40 °C to 130 °C, with full temperature compensation.
- ◆ 优异的过反压保护能力，反压-24V，过压 28V。
Excellent over and back pressure protection, back pressure - 24 V, over voltage 28 v.
- ◆ 电路单元利用 SMT 技术贴装。
SMT for EMA fabrication process.
- ◆ 根据客户要求，多种量程可定制。
According to customer requirements, a variety of ranges can be customized.



氢气/燃气压力传感器
Hydrogen / Gas pressure sensor

产品作用 Application

氢气/燃气压力传感器检测的是输气管路中的氢气/燃气压力，反馈信号给ECU，ECU会根据工况调节，使喷嘴保持恒定的供气气压，并将多余的氢气/燃气送回储气罐。

The hydrogen / gas pressure sensor detects the hydrogen / gas pressure in the gas transmission pipeline and feeds back the signal to the ECU. The ECU will adjust according to the working conditions to keep the nozzle at a constant gas supply pressure and return the excess hydrogen / gas to the gas storage tank.

操作 Operation

◆ 基本原理Basic principle:

氢气/燃气压力传感器压力敏感单元受到输气管路中的氢气/燃气压力变化，内部敏感单元电容值发生变化，调理芯片将电容值输出信号进行放大、校准、线性化等处理后将信号传递给ECU，ECU会根据工况调节，使喷嘴保持恒定的供气气压。

The pressure sensitive unit of the hydrogen / gas pressure sensor is subject to the change of hydrogen / gas pressure in the gas transmission pipeline, and the capacitance value of the internal sensitive unit changes. The conditioning chip amplifies, calibrates and linearizes the capacitance value output signal and transmits the signal to the ECU. The ECU will adjust according to the working conditions to keep the nozzle at a constant gas supply pressure.

◆ 连接选项 Connection options:

根据客户选择定制连接系统。

Customized to customer choice of connection system.

◆ 包装选项 Packaging Options:

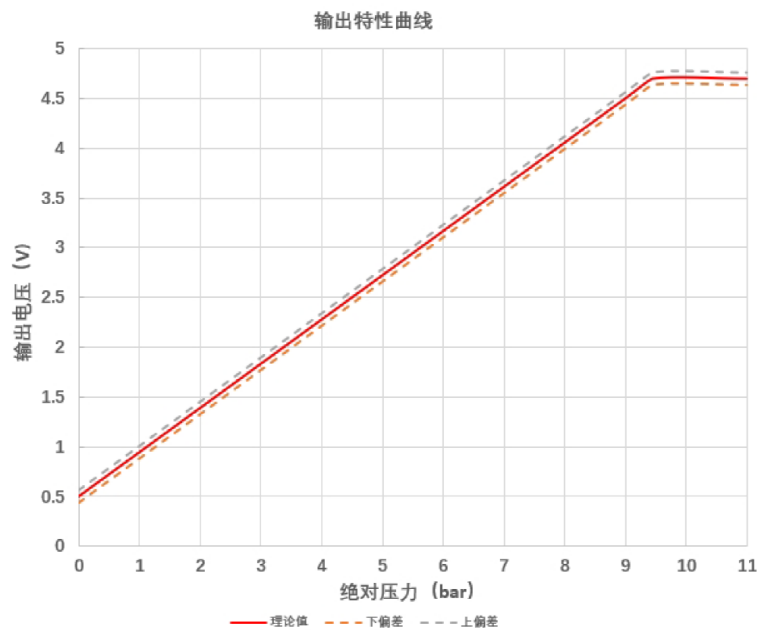
可提供定制包装以满足任何需要，请联系KESENS技术部了解详情。

氢气/燃气压力传感器 Hydrogen / Gas pressure sensor

Custom packaging can be provided to meet any need, please contact KESENS Engineering for details.

技术参数 Functional Characteristics

参数 PARAMETER	符号 NOTE	最小值 MIN.	额定值 NOM.	最大值 MAX.	单位 UNITS	备注 COMMENT
工作温度 TEMPERATURE RANGE	T	-40		130	°C	
压力测量范围 PRESSURE RANGE	P	0		9	Bar	可定制 Customizable
过载压力 Overload pressure	P _o		13.5		Bar	
爆破压力 Burst pressure	P _b		18		Bar	
电源电压 SUPPLY VOLTAGE	V _{cc}	4.5	5	5.5	V	
额定输出电压 NOMINAL OUTPUT	V _{out}	0.5		4.5	V	可定制 Customizable
压力响应时间 PRESSURE RESPONSE TIME	T			10	ms	



可根据需要定制不同量程及电气和环境规范的产品，详情请联系KESENS研发部。

Products with different ranges and electrical and environmental specifications can be customized according to needs. Please contact KESENS design department for details.